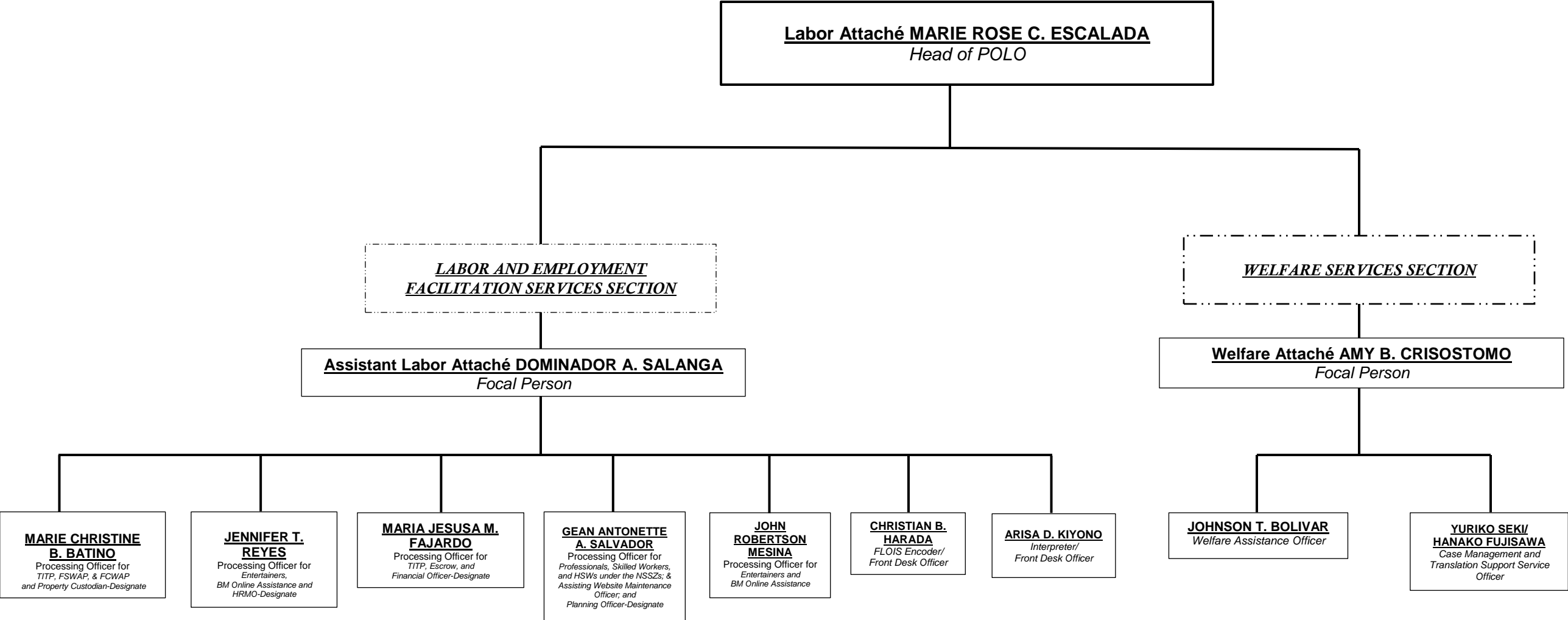


PHILIPPINE OVERSEAS LABOR OFFICE ORGANIZATIONAL STRUCTURE



Labor Attaché MARIE ROSE C. ESCALADA

Head of POLO

***LABOR AND EMPLOYMENT
FACILITATION SERVICES SECTION***

Assistant Labor Attaché DOMINADOR A. SALANGA

Focal Person

WELFARE SERVICES SECTION

Welfare Attaché AMY B. CRISOSTOMO

Focal Person

**MARIE CHRISTINE
B. BATINO**

Processing Officer for
TITP, FSWAP, & FCWAP
and Property Custodian-Designate

**JENNIFER T.
REYES**

Processing Officer for
Entertainers,
BM Online Assistance and
HRMO-Designate

**MARIA JESUSA M.
FAJARDO**

Processing Officer for
TITP, Escrow, and
Financial Officer-Designate

**GEAN ANTONETTE
A. SALVADOR**

Processing Officer for
Professionals, Skilled Workers,
and HSWs under the NSSZs; &
Assisting Website Maintenance
Officer; and
Planning Officer-Designate

**JOHN
ROBERTSON
MESINA**

Processing Officer for
Entertainers and
BM Online Assistance

**CHRISTIAN B.
HARADA**

FLOIS Encoder/
Front Desk Officer

ARISA D. KIYONO

Interpreter/
Front Desk Officer

JOHNSON T. BOLIVAR

Welfare Assistance Officer

**YURIKO SEKI/
HANAKO FUJISAWA**

*Case Management and
Translation Support Service
Officer*